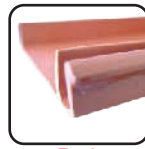


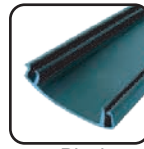
# CIAC® Overhead Line Insulation Sleeve (1-35kV)



Changchun Heat Shrinkable Materials Co.,Ltd. pleased to offer a new reliable yet simple to install cable accessory kit designed for Overhead Conductor rated to 1kV and 35kV ---Overhead Line Insulation Sleeve



Red

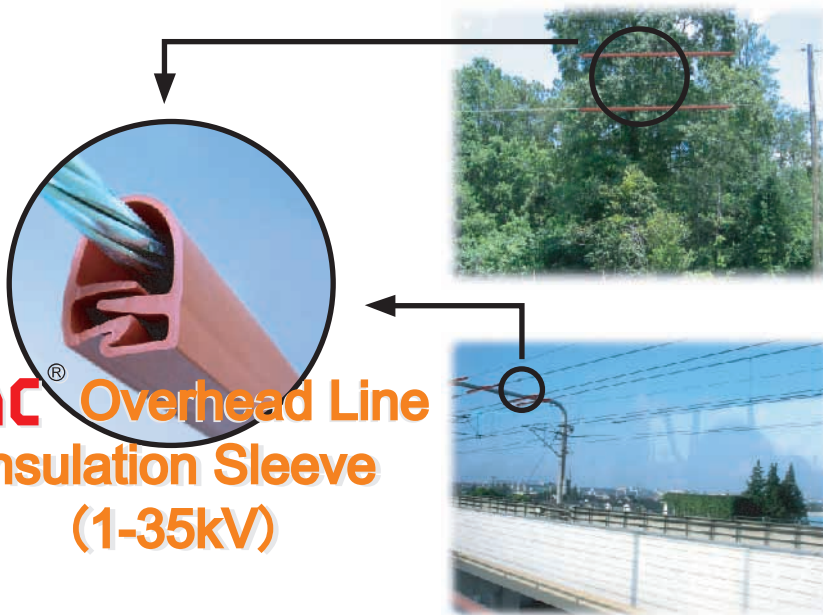


Black

## Features:

- Live installation
- Lightweight
- Anti-tracking
- Weather Resistance
- Superior UV and Abrasion Resistance
- Localized Installation
- Range Taking
- Quick Installation

## Application:



## CIAC® Overhead Line Insulation Sleeve (1-35kV)

If overhead lines get across trees or are close to trees or buildings, it may lead to electrical outages caused by incidental contact from tree branches or wildlife. CIAC® Overhead Line Insulation Sleeves can provide unique insulating protection solution for those kind of problems. (See picture)

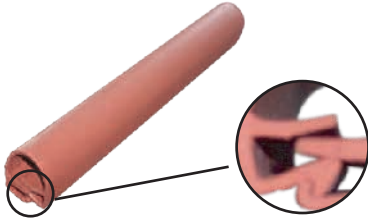
CIAC® Overhead Line Insulation Sleeves, used for railway contact network overhead line system, improve insulating performance and prevent electrical outages caused by incidental contact from tree branches or wildlife.



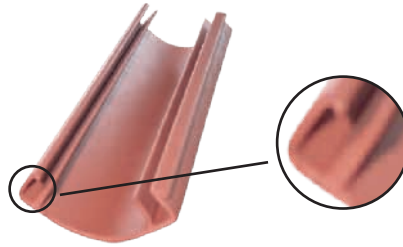
The CIAC® OLIS sleeve is a cold applied wrap around cover that provides retrofit insulation for overhead conductors to help prevent electrical outages caused by incidental contact from tree branches or wildlife. OLIS provides unique insulation protect solution especially for railway overhead conductor.

The OLIS sleeve may be applied selectively on problem spans to avoid costly conductor replacement. Installation is possible on energized lines utilizing the OLIS tool which attaches directly to the overhead conductor and remains stationary in a single location.

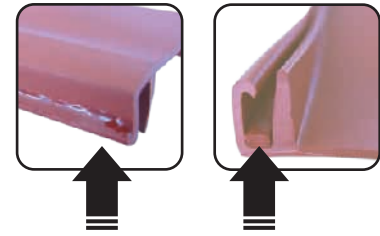
# CIAC® Overhead Line Insulation Sleeve (1-35kV)



Arrow/Receptacle Closure, makes the OLIS easy, quick to install without using any tools.



Internal Creepage Extender, increases the creepage distance and improves insulating performance



OLIS-A Arrow/Receptacle Closure with mastic, making more sealing effect.

## Technical Data:

Property		Test procedure and condition	Typical Performance	Test Method	
Physical	Water Absorption		≤0.1	GB/T1034-1998	ISO 62
	Shore Hardness		80±5	GB2411-1980	ISO 868
	Tensile Strength		≥12.0	GB/T1040-1992	ISO 604
	Ultimate elongation		≥400	GB/T1040-1992	ISO 604
	Low Temperature Flexibility	-10±2°C/1hr	No cracking	UL224-1992	UL224-1992
After aging	Heat Shock	136±1°C/1hr	No cracking	UL224-1992	UL224-1992
	Tensile Strength	158±1°C/168hr	Over 70%	GB/T7141-1992	
	Elongation	158±1°C/168hr	Over 70%	GB/T1040-1992	ISO 604
Electrical	Dielectric Strength		≥16	GB1408-1989	IEC 243
	Volume Resistivity		≥1.0×10 <sup>13</sup>	GB1410-1989	IEC 93
	Dielectric constant		1.0~3.5	GB1409-1988	IEC 250
Chemical	Flammability		≥28.0	GB/T2406-1993	ISO 4589
	Fire hazard test	960±15°C	Pass		

## Product Dimension:

NO.	Specification	Voltage class	Conductor cross section	Max. conductor diameter	OLIS length (M/roll)
1	OLIS—φ18	1~15kV	Up to 240mm <sup>2</sup>	18mm	10
2	OLIS—φ18—A*	1~35kV	Up to 240mm <sup>2</sup>	18mm	10
3	OLIS—φ38	1~15kV	Up to 1000mm <sup>2</sup>	38mm	10
4	OLIS—φ38—A*	1~35kV	Up to 1000mm <sup>2</sup>	38mm	10

Remark:A means including mastic

## Ordering information:

- Overhead Conductors: standard package for OLIS are all 10m(3.048feet) continuous on a spool.
- Two optional standard colors:Red, Black; For other custom colors, please contact our service phone.
- Please Contact Shanghai China Kinwa for used on 35kV and other sizes.